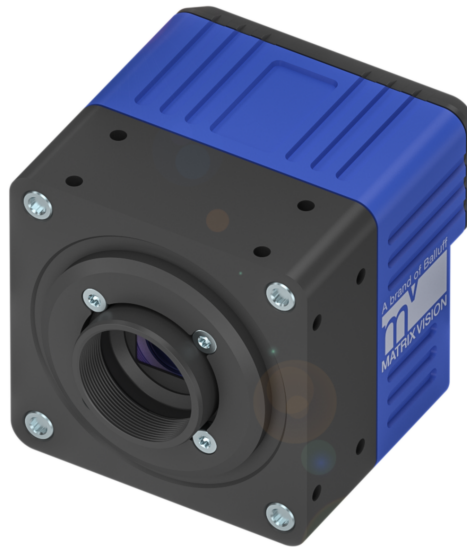


MATRIX VISION Industrial Cameras  
mvBlueCOUGAR-XT Series - Standard



**BVS CA-GT1-xxxxxx-(1)(2)(3)(4)(5)(6)-001**

mvBlueCOUGAR-XT / BVS CA-GT1-xxxxxx-(1)(2)(3)(4)(5)(6)-001  
10GigE Vision industrial camera

**xxxxxx Model**  
See table below

**(1) Handling**  
1 = Standard handling

**(2) Lensholder**  
1 = C-Mount, Type2, with high durability and factory-set backfocus, fixed square filter

**(3) Filter**  
0 = Without filter  
1 = IR-Cut  
2 = Glass filter  
3 = Daylight cut

**(4) Housing**  
1 = Standard housing, blue with logo, aluminium  
F = Standard housing with fan, aluminium

**(5) I/O**  
4 = Opto isolated IN, high side switch Out, M12 connectors, for BCX-PoE-I

**(6) Software**  
0 = None

Model name	Resolution	FPS	Sensor	Pixel size
BVS CA-GT1-				
0051BG/C	5.1 MP (2464 x 2064)	221.7/221.7*	IMX537 (1/1.8", GS, CMOS)	2.74 µm
0081ZG/C	8.1 MP (2848 x 2848)	147.4/147.4*	IMX536 (2/3", GS, CMOS)	2.74 µm
0124BG/C	12.4 MP (4128 x 3008)	101.8/99.8*	IMX535 (1/1.1", GS, CMOS)	2.74 µm
0162ZG/C	16.2 MP (5328 x 3040)	81.1/76.5*	IMX532 (1.1", GS, CMOS)	2.74 µm
0204ZG/C	20.4 MP (4512 x 4512)	64.3/60.9*	IMX531 (1.1", GS, CMOS)	2.74 µm
0246ZG/C	24.6 MP (5328 x 4608)	54.3/50.5*	IMX530 (1.2", GS, CMOS)	2.74 µm

G/C = Monochrome and color models available  
FPS = Frames per Second  
GS = Global Shutter  
RS = Rolling Shutter  
\* = Burst Mode/Streaming

# MATRIX VISION Industrial Cameras mvBlueCOUGAR-XT Series - Standard



## Basic features

<b>Approval/Conformity</b>	CE WEEE
<b>Standards</b>	EMVA 1288 GigE Vision GenICam IEEE 802.3at PTP IEEE1588 (Master / Slave)
<b>Version</b>	10GigE Vision industrial camera

## Electrical connection

<b>Connection 1</b>	10GigE-Bus: M12x1-Female, 8-pin, X-coded
<b>Connection 2</b>	Power/ IO: M12x1-Male, 12-pin, A-coded
<b>Connection 3</b>	Multipurpose IO: M8x1-Female, 8-pin, A-coded
<b>Polarity reversal protected</b>	yes
<b>Short-circuit protection</b>	yes

## Electrical data

<b>Current draw max.</b>	1500 mA
<b>Operating voltage U<sub>b</sub></b>	16...28 VDC or PoE+ (IEEE 802.3at)

## Environmental conditions

<b>Ambient temperature</b>	0...45 °C
<b>EN 60068-2-27, Shock</b>	100 G, half-sine, 1000 pos., 1000 neg., X, Y, Z
<b>EN 60068-2-6, Vibration</b>	15 G, 10 - 500 Hz, 5h X, Y, Z
<b>IP rating</b>	IP67, (without fan)
<b>Relative humidity</b>	20...80%
<b>Storage temperature</b>	-20...60 °C

## Remarks

Not included in scope of delivery: Camera lens, light, connection cable, power supply

\* Refer to manual for exact values

For more information about MTTF and B10d see MTTF / B10d Certificate

Indication of the MTTF- / B10d value does not represent a binding composition and/or life expectancy assurance; these are simply experiential values with no warranty implications. These declared values also do not extend the expiration period for defect claims or affect it in any way.

## Functional Characteristics

<b>Additional function</b>	4x User sets, 4x Counter, 2x Timer, Chunk data
<b>Binning</b>	Horizontal and vertical
<b>Data storage</b>	2048 MB
<b>Decimation</b>	Horizontal and vertical
<b>Exposure time</b>	10 µs...20 s *
<b>Filter</b>	IR cut filter, other filters on request
<b>Image formats</b>	Mono8...Mono16 Bayer8...Bayer16 *
<b>Trigger Modi</b>	Free run Hardware trigger Software trigger

## Interface

<b>Digital inputs</b>	4x PNP galvanically isolated
<b>Digital outputs</b>	4x PNP high side
<b>Interface</b>	Gigabit Ethernet (GigE Vision) 10G / 5G / 2.5G / 1G Base-T Ethernet PoE+ 4x bidirectional: input (not isolated) / output (high side or open drain) RS232

## Material

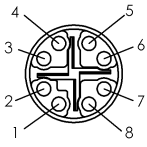
<b>Housing material</b>	Aluminum, Powder coated
-------------------------	-------------------------

## Mechanical data

<b>Dimension</b>	65 x 65 x 73.1 mm
<b>Lens mount</b>	C-Mount, other types on request
<b>Weight</b>	480 g (without fan)

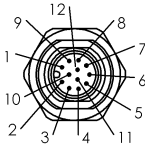
Connector Diagramm

10GigE-Bus (M12)



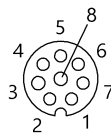
PIN 1: BI\_DA+  
 PIN 2: BI\_DA-  
 PIN 3: BI\_DB+  
 PIN 4: BI\_DB-  
 PIN 5: BI\_DD+  
 PIN 6: BI\_DD-  
 PIN 7: BI\_DC-  
 PIN 8: BI\_DC+

Power / IO (M12)



PIN 1: PWR\_IN  
 PIN 2: GND  
 PIN 3: DigOut3  
 PIN 4: Opto DigIn0  
 PIN 5: DigOut2  
 PIN 6: DigOut0  
 PIN 7: Opto DigIn\_GND  
 PIN 8: Opto DigIn2  
 PIN 9: Opto DigIn3  
 PIN10: DigOut\_PWR\_IN  
 PIN11: Opto DigIn1  
 PIN12: DigOut1

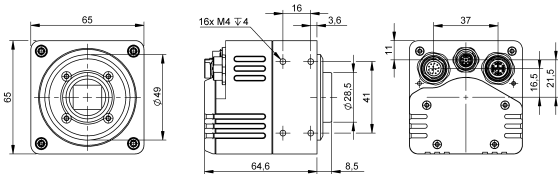
Multipurpose IO (M8)



PIN 1: Bidirectional I/O0  
 PIN 2: Bidirectional I/O1  
 PIN 3: RS232 RX  
 PIN 4: RS232 TX  
 PIN 5: Bidirectional I/O2  
 PIN 6: Bidirectional I/O3  
 PIN 7: GND  
 PIN 8: PWR\_OUT

Product View

BVS CA-GT1-xxxxxx-x1x14x



BVS CA-GT1-xxxxxx-x1xF4x

