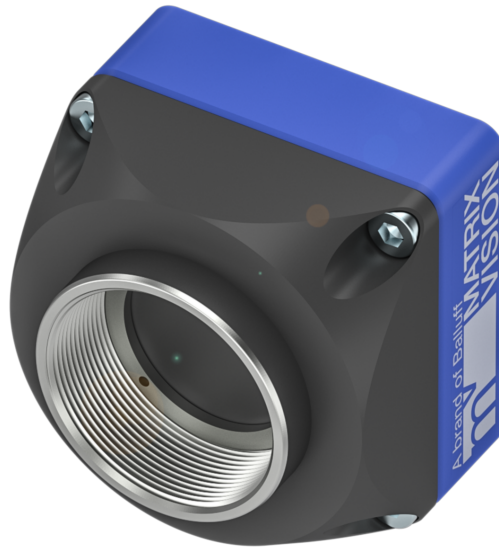


MATRIX VISION Industrial Cameras
mvBlueNAOS2 Series - Standard



BVS CA-BN2-xxxxxx-(1)(2)(3)(4)(5)(6)-001

mvBlueNAOS2 N4e / BVS CA-BN2-xxxxxx-(1)(2)(3)(4)(5)(6)-001
PCI Express industrial camera

xxxxxx Model
See table below

(1) Handling
1 = Standard handling

(2) Lensholder
1 = C-Mount, Type2, with high durability and factory-set backfocus, fixed square filter
5 = C-Mount, Type3 (low cost, factory-set backfocus, Ø23.2 mm Filter)

(3) Filter
0 = Without filter
1 = IR-Cut
2 = Glass filter
3 = Daylight cut

(4) Housing
1 = Standard housing, blue with logo, aluminium

(5) I/O
1 = Standard I/Os

(6) Software
0 = None

Model name	Resolution	FPS*	Sensor	Pixel size
BVS CA-BN2-				
0016ZG/C	1.6 MP (1456 x 1088)	226.5/226.5	IMX273 (1/2.9", GS, CMOS)	3.45 µm
0032ZG/C	3.2 MP (2064 x 1544)	191.5/191.5	IMX252 (1/1.8", GS, CMOS)	3.45 µm
0051ZG/C	5.1 MP (2464 x 2056)	140/140	IMX250 (2/3", GS, CMOS)	3.45 µm
0089ZG/C	8.9 MP (4096 x 2176)	88.7/88.7	IMX255 (1", GS, CMOS)	3.45 µm
0124ZG/C	12.3 MP (4096 x 3008)	64.6/64.6	IMX253 (1.1", GS, CMOS)	3.45 µm
0124BG/C	12.4 MP (4128 x 3008)	104.5/104.5	IMX535 (1/1.1", GS, CMOS)	2.74 µm
0246AG/C	24.6 MP (5328 x 4608)	24.1/24.1	IMX540 (1.2", GS, CMOS)	2.74 µm

G/C = Monochrome and color models available

FPS = Frames per Second

GS = Global Shutter

RS = Rolling Shutter

* = Burst Mode/Streaming

MATRIX VISION Industrial Cameras mvBlueNAOS2 Series - Standard



Basic features

Approval/Conformity	CE WEEE
Standards	EMVA 1288 GenICam
Version	Industrial camera

Electrical connection

Short-circuit protection	no
---------------------------------	----

Electrical data

Current draw max.	1.8 A
Operating voltage Ub	5...12 VDC

Environmental conditions

Ambient temperature	0...45 °C
IP rating	IP30
Relative humidity	20...80%
Storage temperature	-20...60 °C

Functional Characteristics

Additional function	4x User sets, 4x Counter, 2x Timer, Chunk data
Binning	Horizontal and vertical
Decimation	Horizontal and vertical
Exposure time	10 µs...20 s *
Filter	IR cut filter, other filters on request
Image formats	Mono8...Mono16 Bayer8...Bayer16 *
Trigger Modi	Free run Hardware trigger Software trigger

Interface

Digital inputs	4x PNP
Digital outputs	4x PNP
Interface	PCIe

Material

Housing material	Aluminium, Anodized
-------------------------	---------------------

Mechanical data

Dimension	32 x 40 x 32 mm
Lens mount	C-Mount, other types on request
Weight	71 g

Remarks

Not included in scope of delivery: Camera lens, light, connection cable, power supply

* Refer to manual for exact values

For more information about MTTF and B10d see MTTF / B10d Certificate

Indication of the MTTF- / B10d value does not represent a binding composition and/or life expectancy assurance; these are simply experiential values with no warranty implications. These declared values also do not extend the expiration period for defect claims or affect it in any way.

MATRIX VISION Industrial Cameras
mvBlueNAOS2 Series - Standard

Connector Diagramm

PCIe-Embedded (Power, IO,
 UART, I²C) (PCIe-Embedded
 interface)



Product View

BVS CA-BN2-xxxxxx-x1x110 / -x5x110

